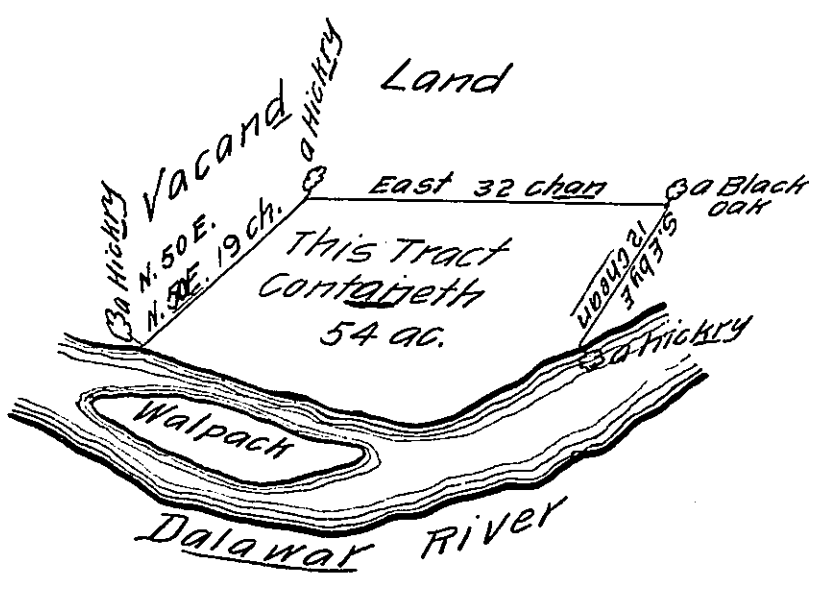


N^o 27.



This Tract of Land beginneth at a hickry Standing by Dalawar River over against Nicolas Island caled Walpack then Runeth north ^{ninten ch.} fifty degres east to a hickry then east by Vacand Land thirty-two chears to a black oak then south east by east twelve chears to a hickry by Dalawar River then down the sevaral courses thereof to the place of begining. Containing fifty fowr acres surveyed in May 1730 by

John Chapman —

In Right of William Allon.

IN TESTIMONY that the above is a copy of the original remaining on file in the Department of Internal Affairs of Pennsylvania, made conformably to an Act of Assembly approved the 16th day of February, 1833, I have hereunto set my Hand and caused the Seal of said Department to be affixed at Harrisburg, this twenty-second day of July 1910.

Henry Houck
 Secretary of Internal Affairs.